



The Backcountry Hut Company



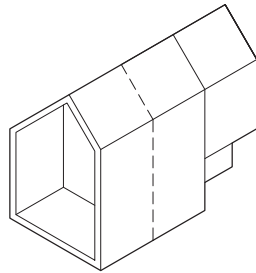
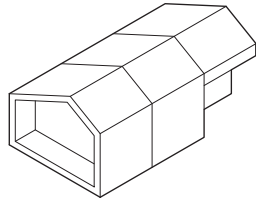
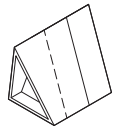
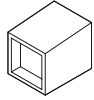
System 01



The Backcountry Hut Company



Great Lakes Cabin / Georgian Bay ON / 2019



Our Mission

The Backcountry Hut Company was founded in 2015, born from a deep appreciation of the outdoors and a desire to put down roots in the places we seek adventure.

We specialize in compact modernist recreational structures, crafted to rigorous standards, designed to leave a minimal impact on our environment. Our collection of prefabricated, flat-packed building systems help individuals and organizations turn dreams into destinations, and can be configured to meet a variety of uses, landscapes, and lifestyle needs.

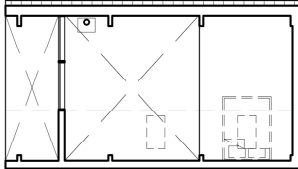
Inspired by simplicity and the quest to provide outstanding design and value, our systems are developed with user participation in mind - with an emphasis on self-assembly and communal construction. The result is a prefabricated kit-of-parts building system that ships directly to site and can be assembled in a fraction of the time of a traditional construction process.

Whether your adventures call you to the mountains, the coast, or somewhere in between, you need a place to call home at the end of the day.

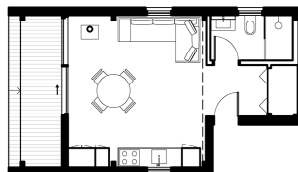
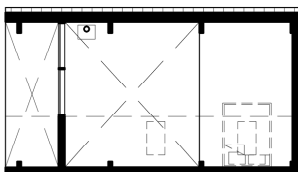
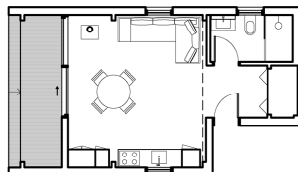
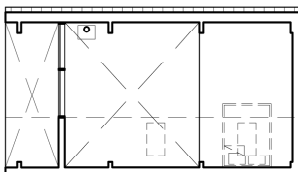
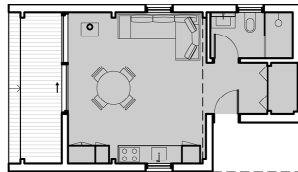
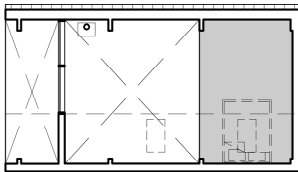
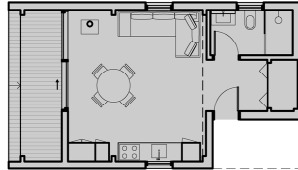
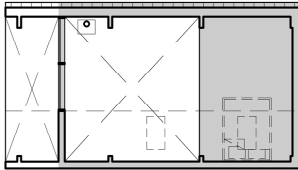
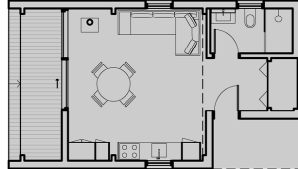


Definitions

Upper Floor



Main Floor



Building Footprint

The floor area covered by all roofs and soffits. This includes both interior and exterior space.

Gross Built Area

The built area including all enclosed floors and lofts measured from the exterior face of building walls. Covered exterior decks are included. Open-to-below spaces are excluded. Stairs are counted on one level.

Interior Layout Area

The area including all enclosed floors and lofts measured from the inside face of building walls and excluding interior partition walls and structure. Covered decks are excluded. Hallways are included. Open to below spaces are excluded. Stairs are counted on one level.

Exterior Deck

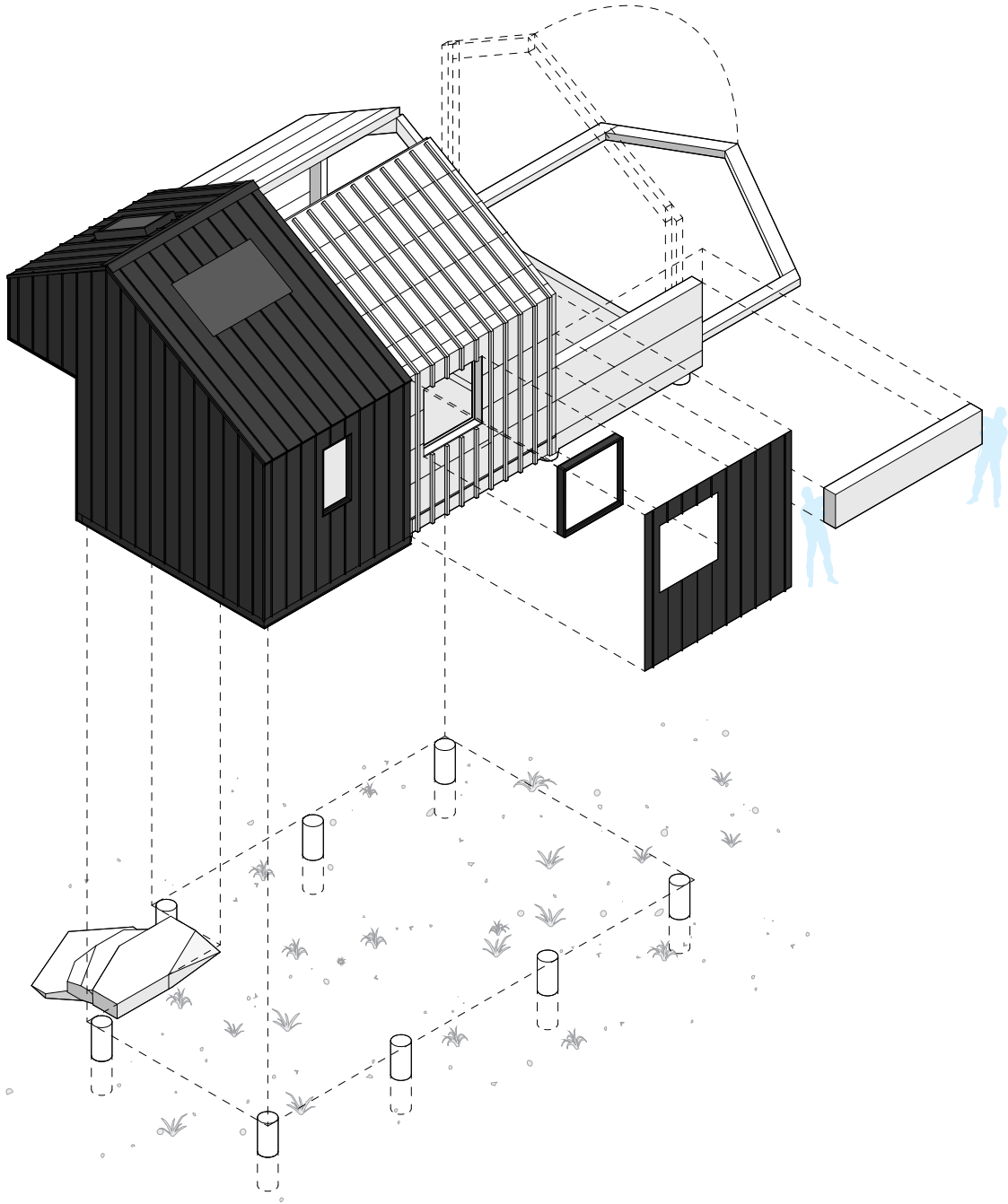
The area of all exterior covered decks and porches.

Interior Layouts

Interior layouts are provided for reference only and illustrate recommendations for functional program and use.

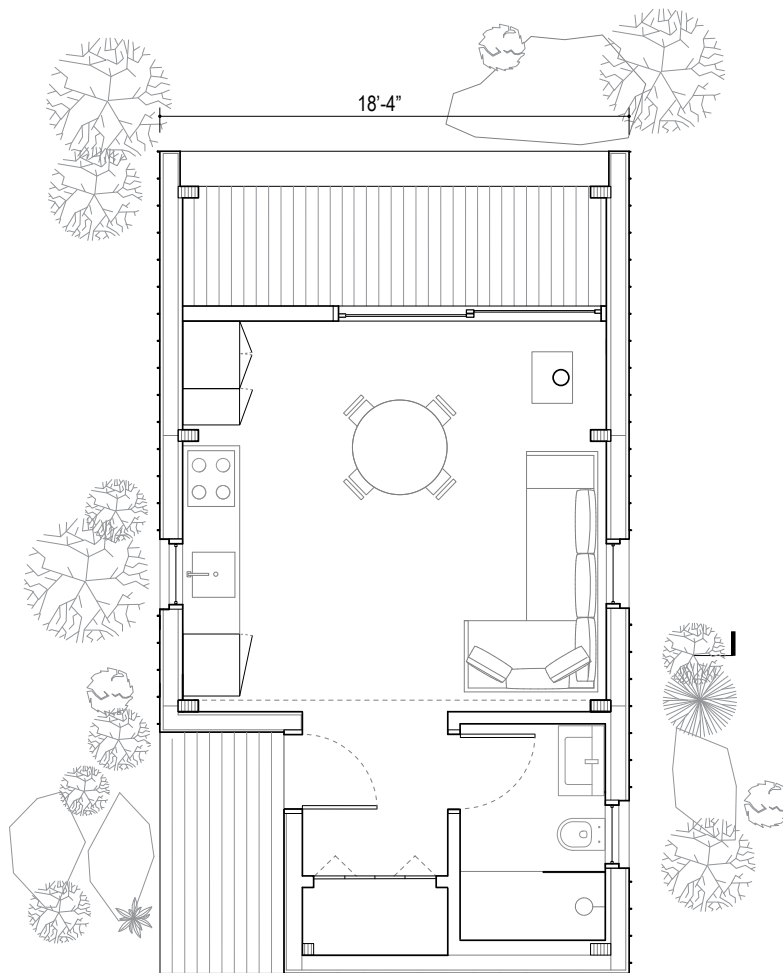
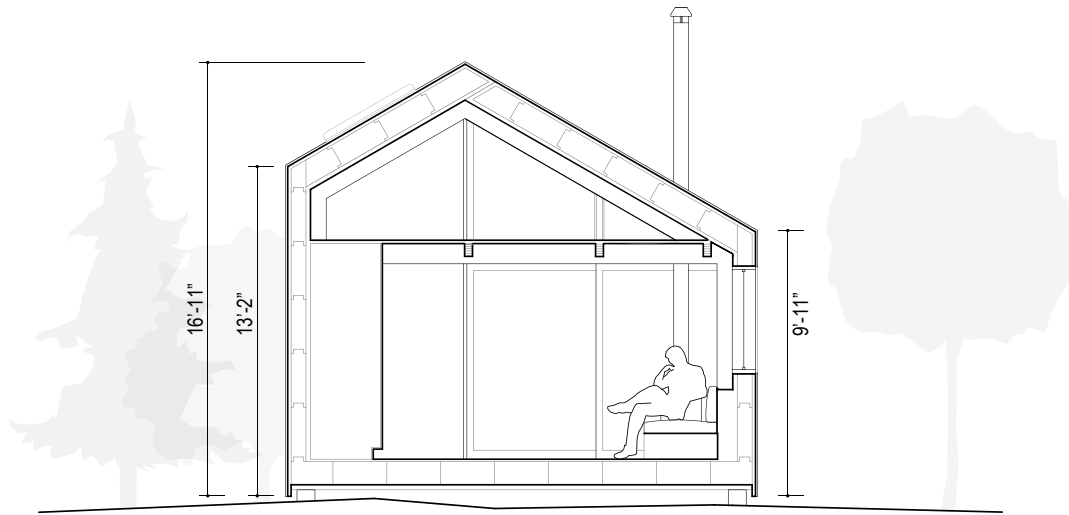


The Backcountry Hut Company





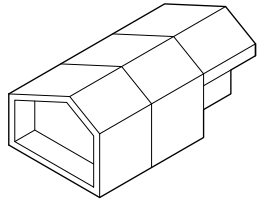
The Backcountry Hut Company



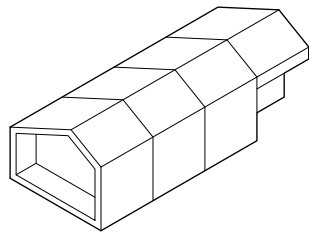


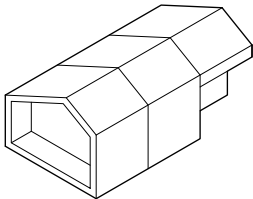
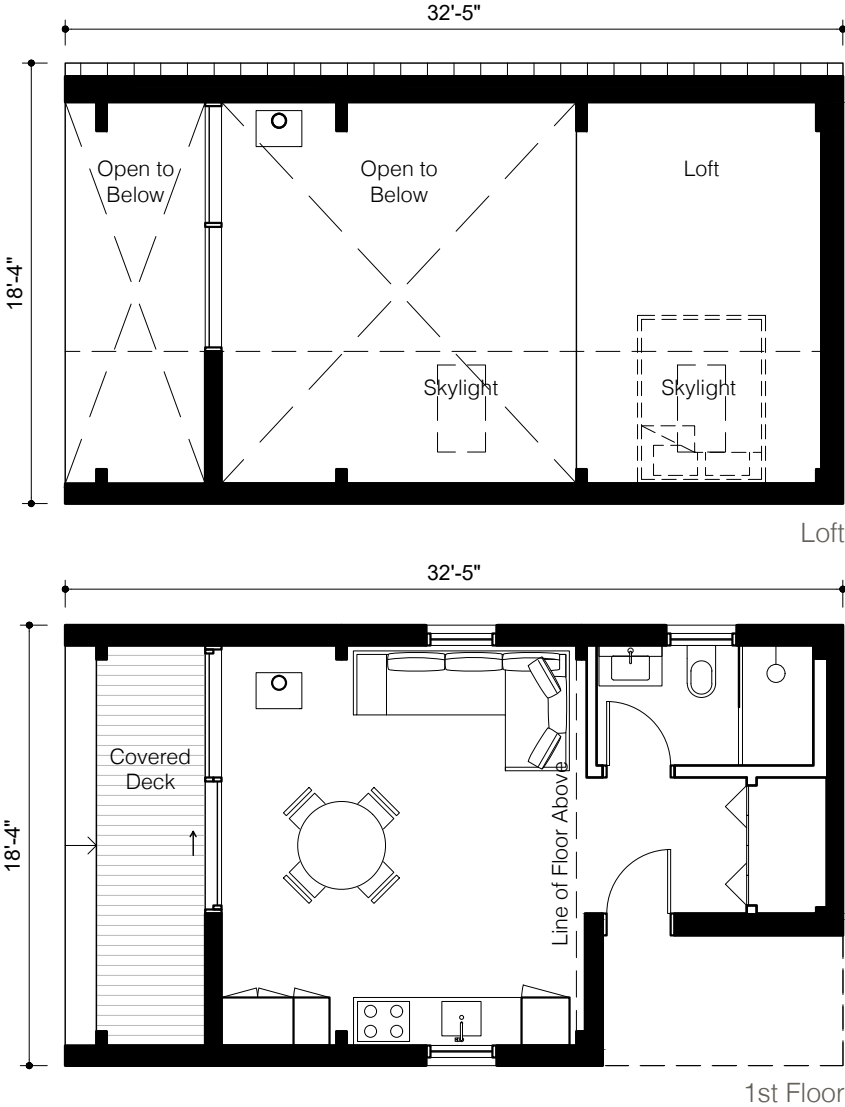
The Backcountry Hut Company

3 Module



4 Module



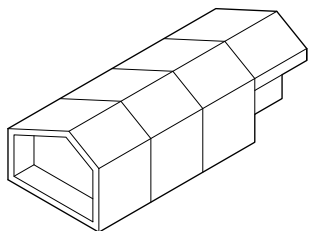
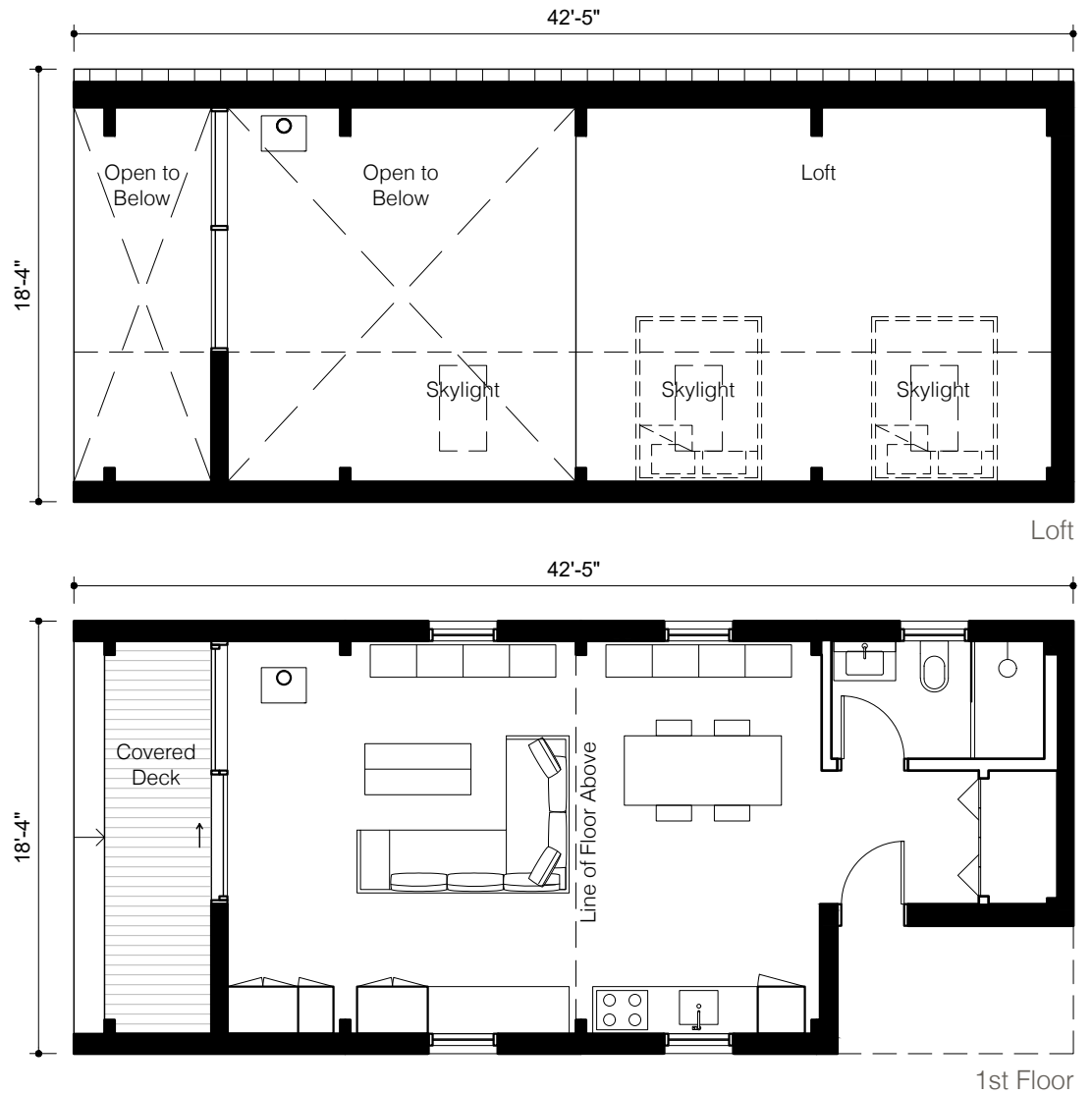


System 01 | 3 Module 1 A

Gross Built Area:	794 sq ft
Building Footprint:	595 sq ft
Interior Layout Area:	516 sq ft
Deck Area:	97 sq ft



The Backcountry Hut Company

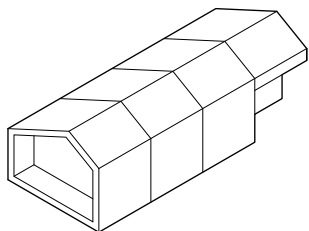
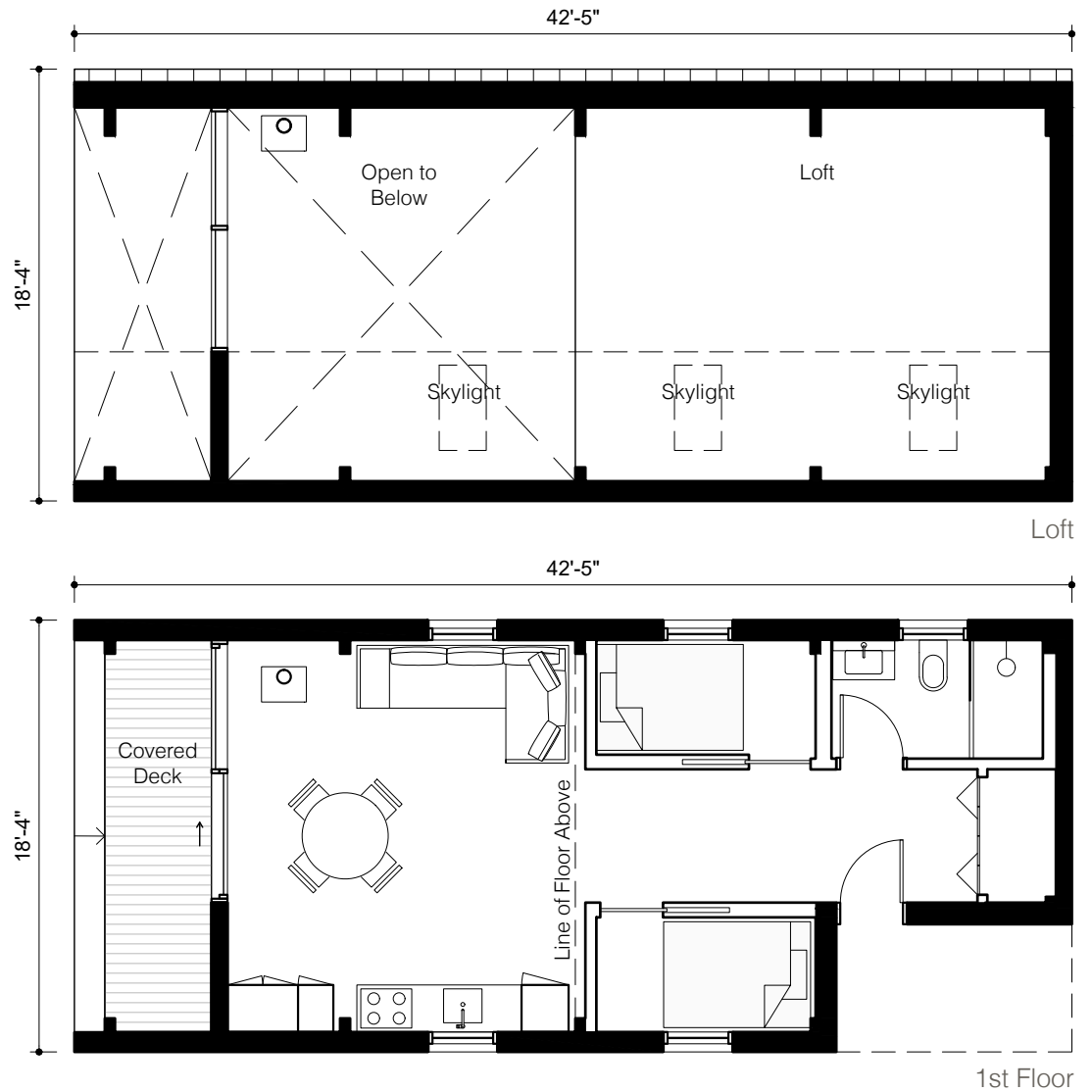


System 01 | 4 Module | A

Gross Built Area:	1161 sq ft
Building Footprint:	778 sq ft
Interior Layout Area:	841 sq ft
Deck Area:	97 sq ft



The Backcountry Hut Company

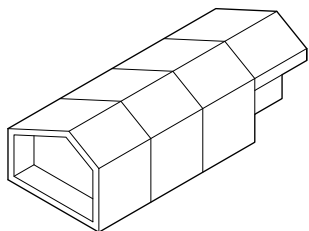
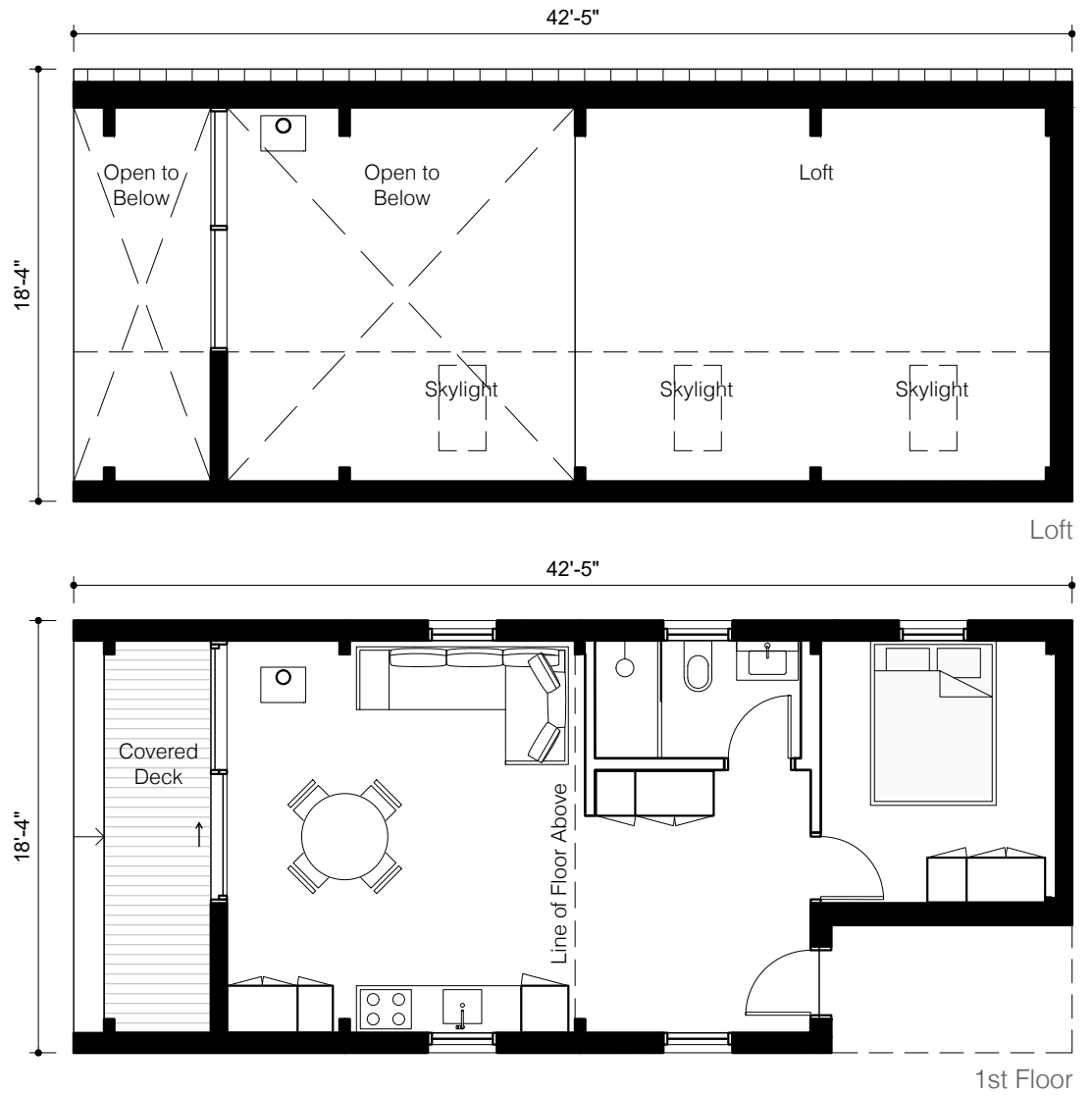


System 01 | 4 Module | B

Gross Built Area:	1161 sq ft
Building Footprint:	778 sq ft
Interior Layout Area:	825 sq ft
Deck Area:	97 sq ft



The Backcountry Hut Company

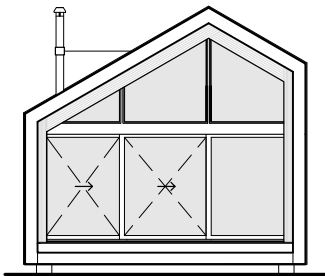


System 01 | 4 Module | C

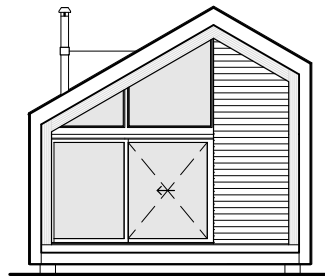
Gross Built Area:	1161 sq ft
Building Footprint:	778 sq ft
Interior Layout Area:	835 sq ft
Deck Area:	97 sq ft



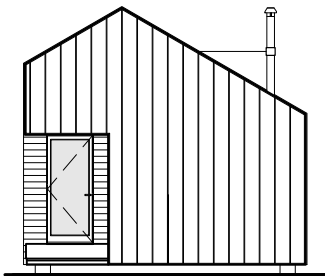
The Backcountry Hut Company



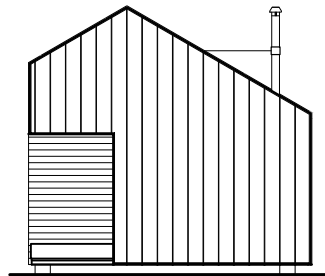
Full Glazing Wall (Sliding Door)



2/3 Glazing Wall (Sliding Door)



Entry Notch



Entry Notch



@thebackcountryhutcompany